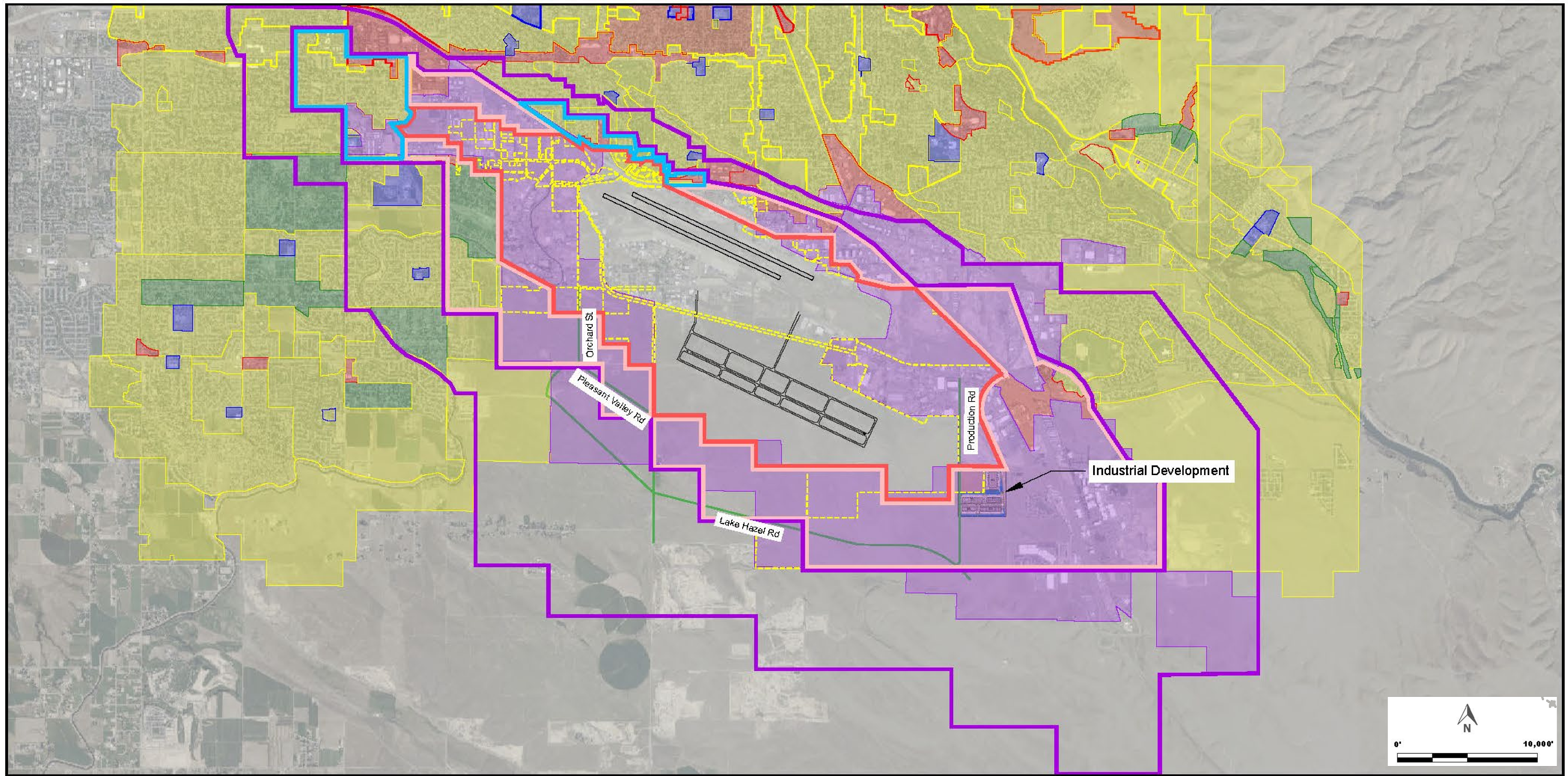


# LAND USE



**LEGEND**

- - - Airport Property Line
- New Streets/Extensions

- █ Influence Area - A
- █ Influence Area - B
- █ Influence Area - B1
- █ Influence Area - C

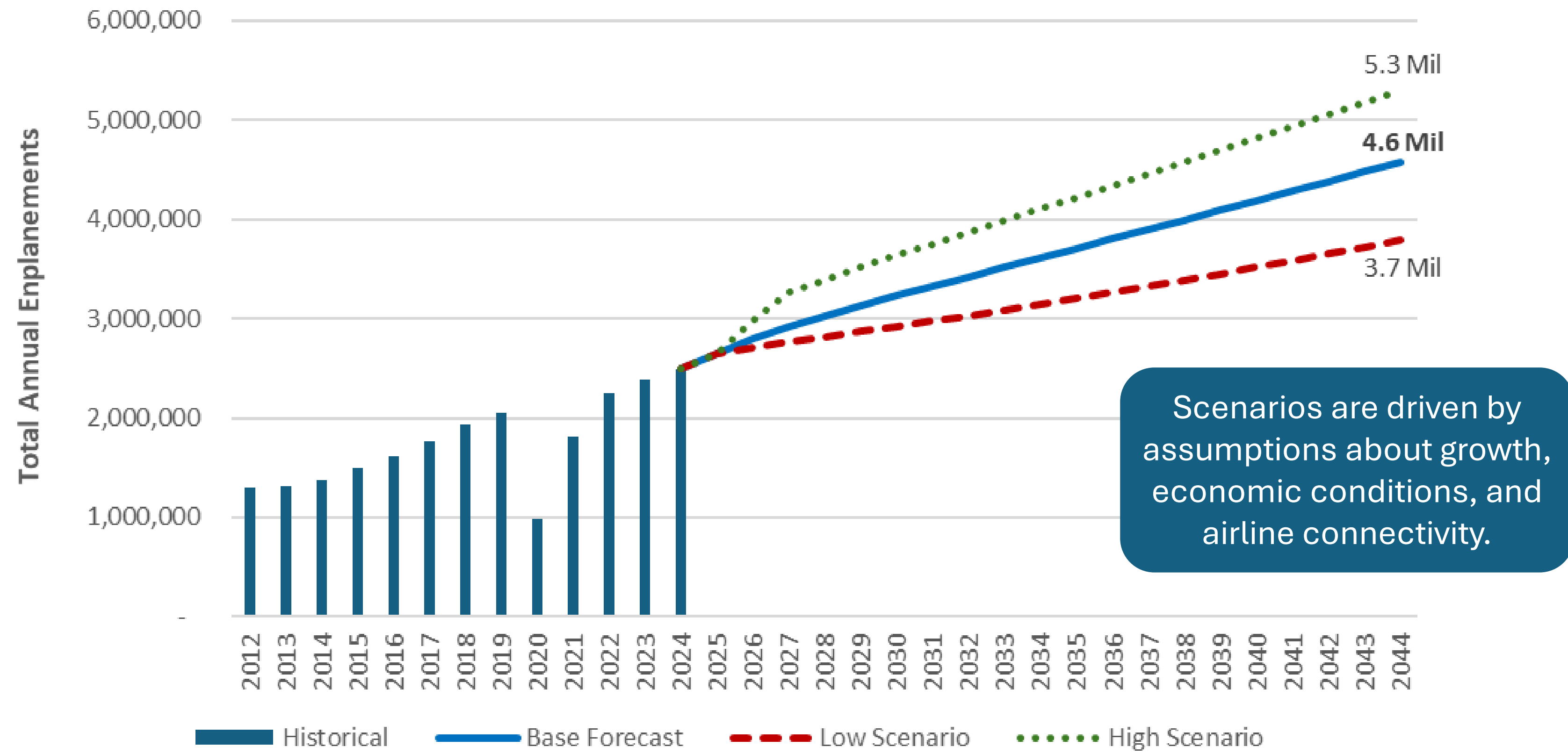
**ZONING**

- █ Residence or accommodation functions
- █ General Sales or services
- █ Manufacturing and wholesale trade
- █ Transportation, communication, information, and utilities

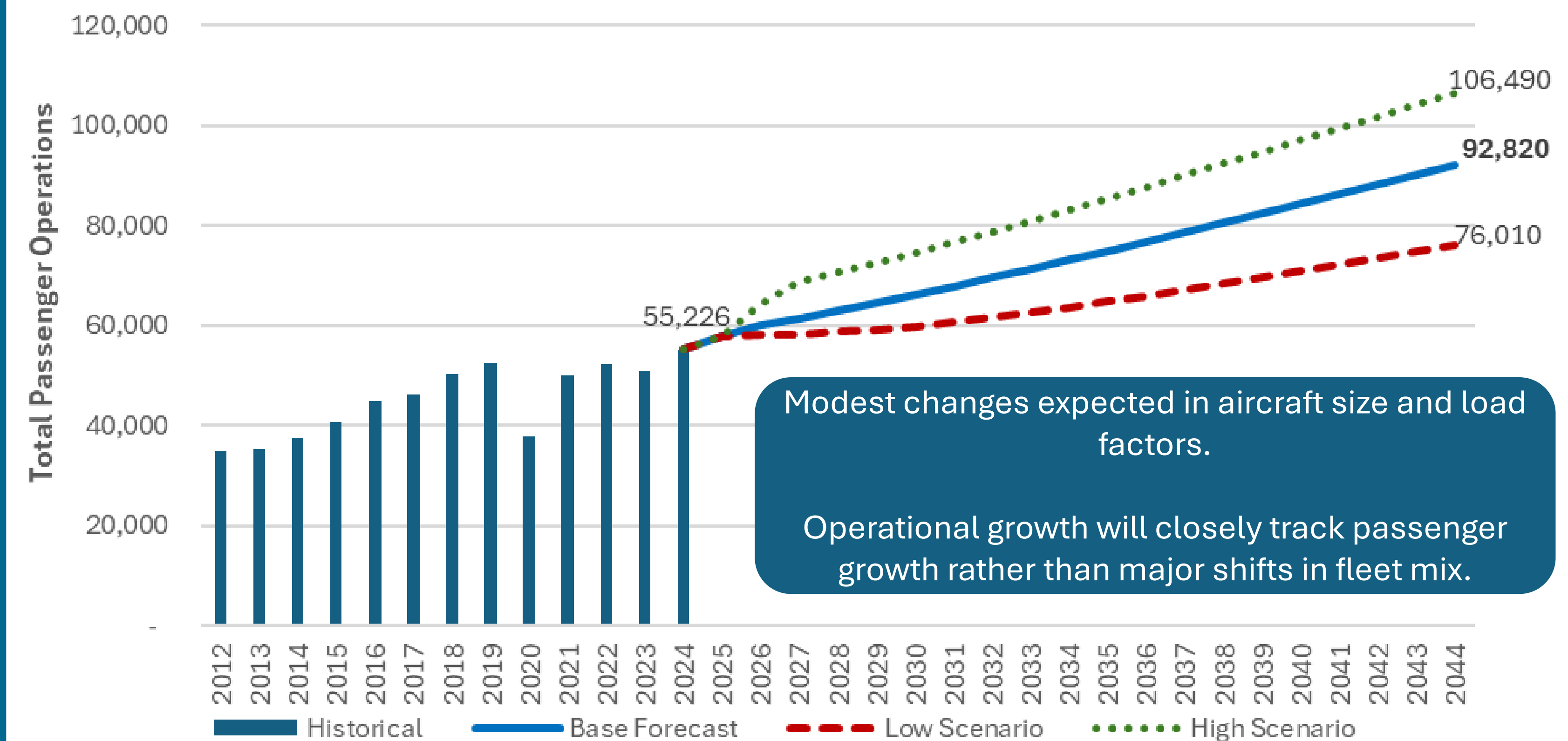
- █ Arts, entertainment, and recreation
- █ Education, public admin, health care, and other inst.
- █ Construction-related businesses
- █ Mining and extraction establishments
- █ Agriculture, forestry, fishing and hunting

# AVIATION DEMAND FORECAST

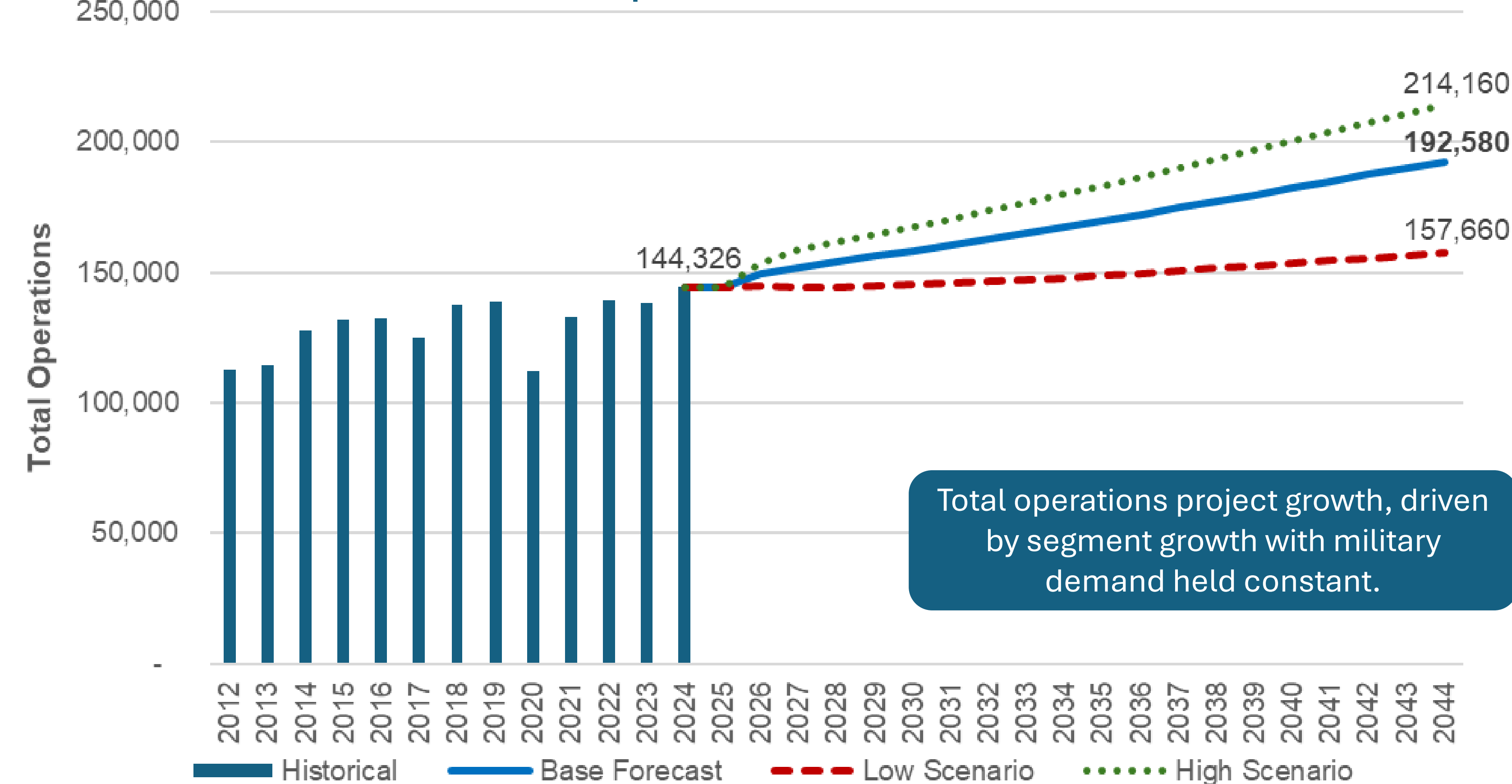
## Enplanements Forecasts



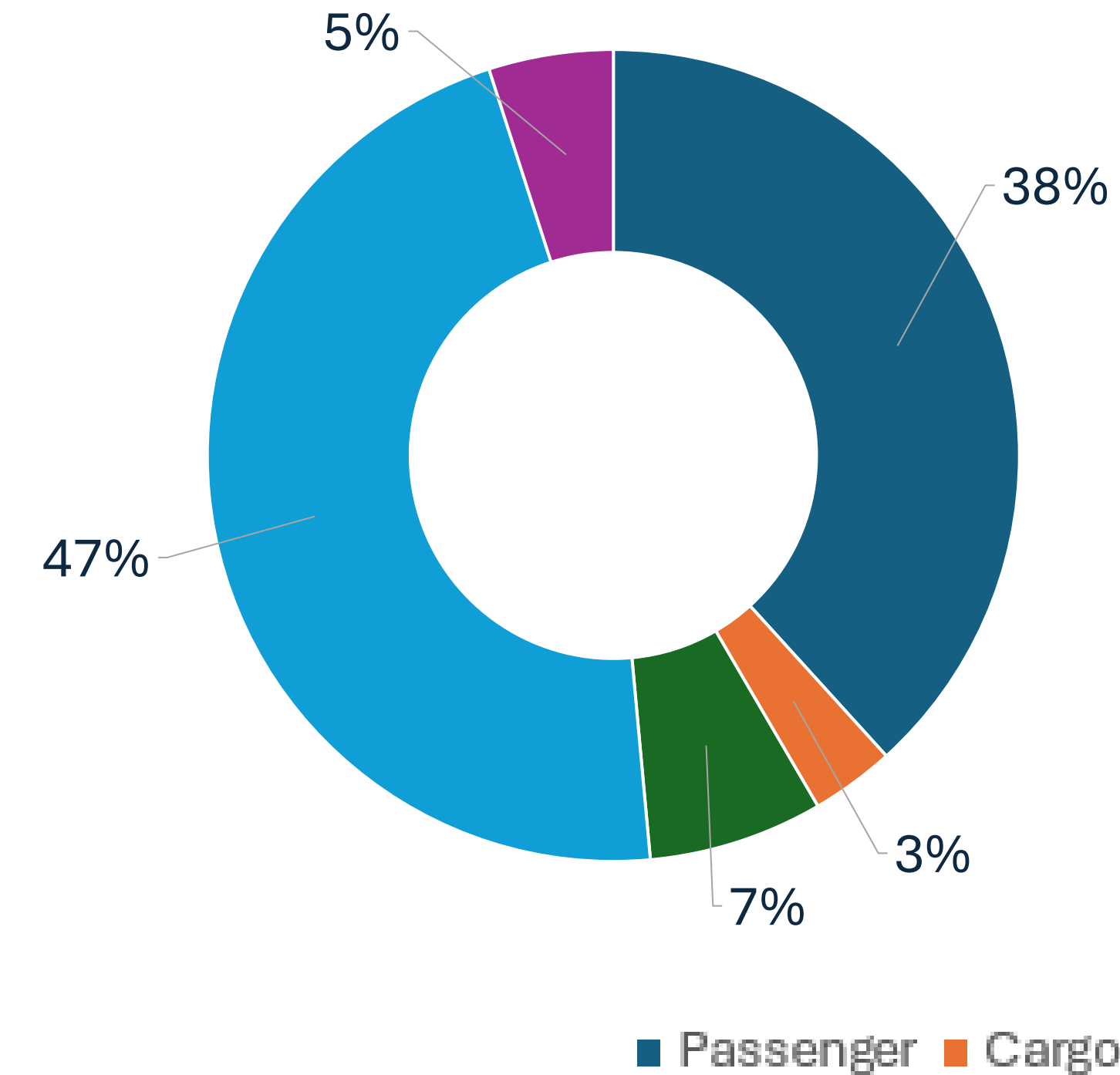
## Commercial Operations Forecast



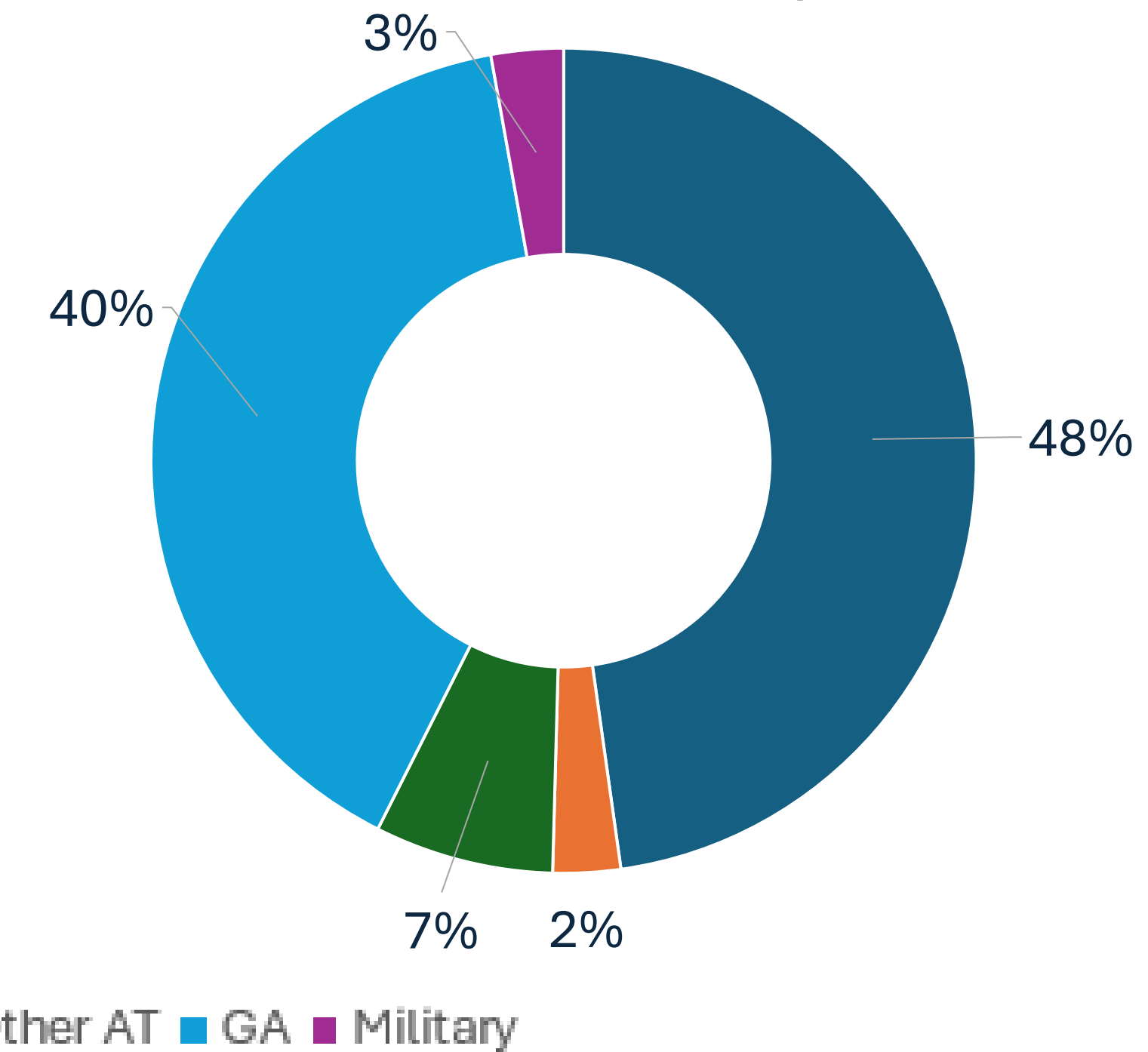
## Total Operations Forecast



## 2024 Total Aircraft Operations



## 2044 Total Aircraft Operations



Commercial passenger operations expected to overtake GA and become the largest segment by 2044 with a projected 48% share.

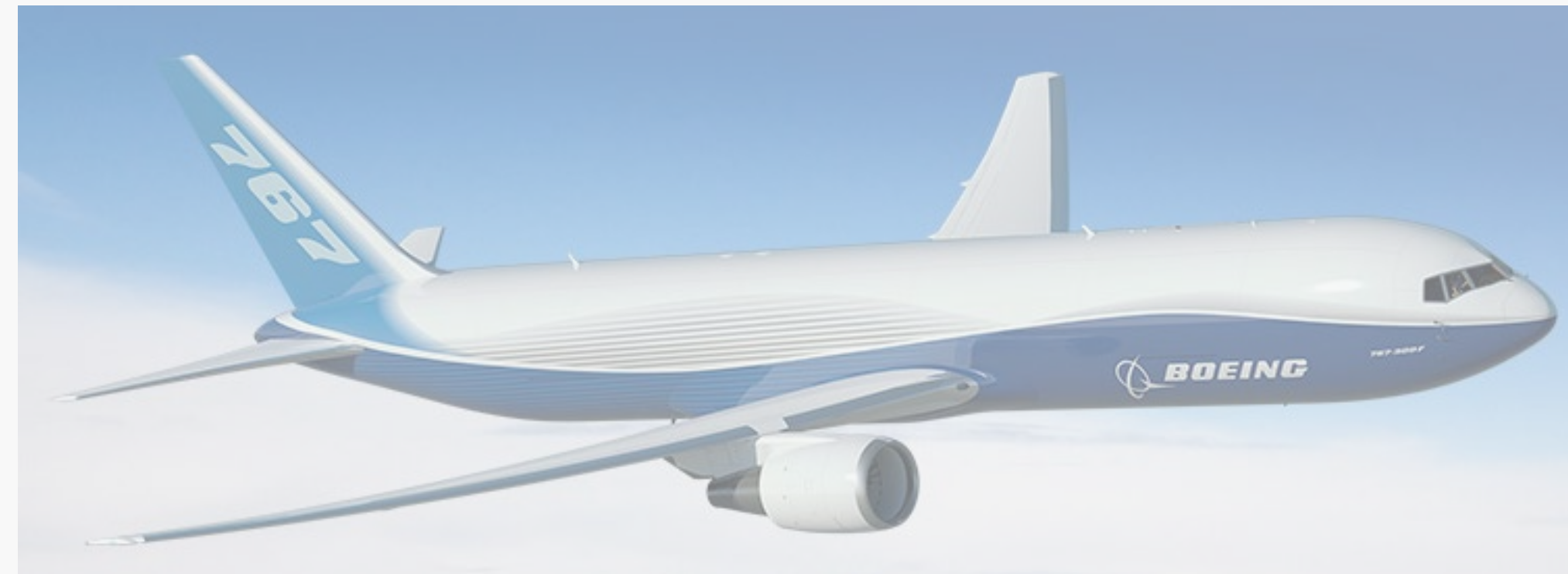
# CRITICAL AIRCRAFT

Runway 10L-28R & Runway 10R-28L

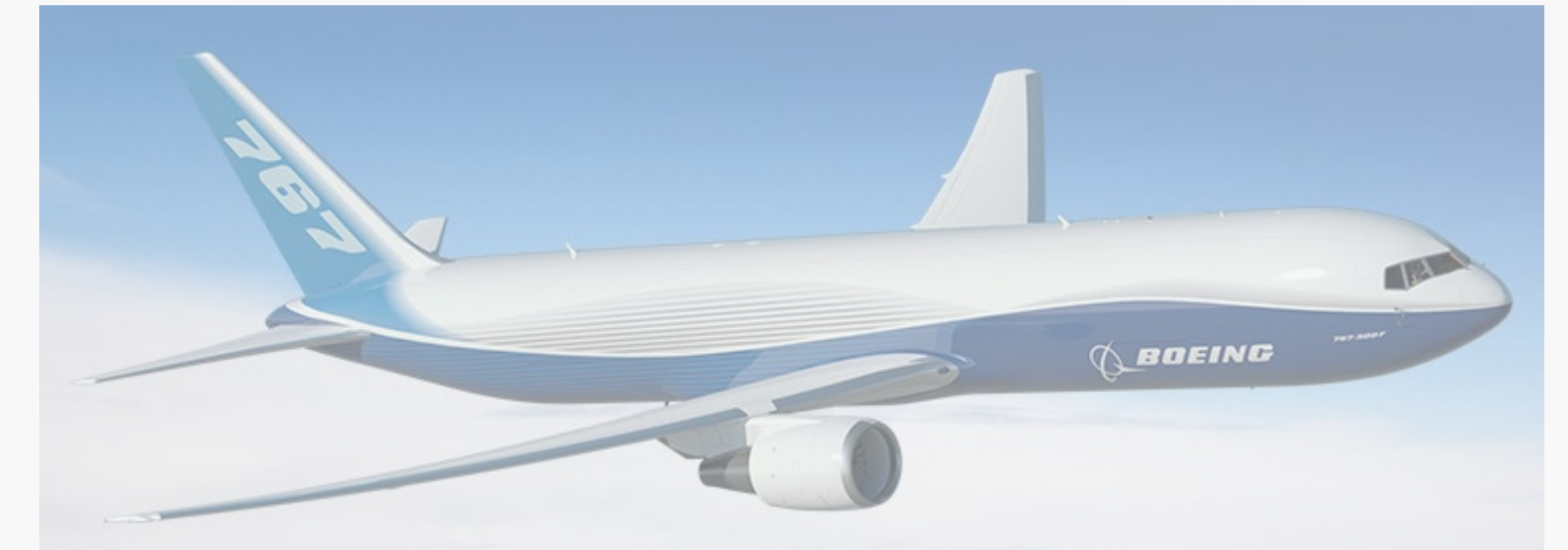
AAC: D  
B737-900/MAX 9



ADG: IV  
B767-300



TDG: 5  
B767-300



# MASTER PLAN



# AREAS OF RESPONSIBILITY

## Boise Department of Aviation

- Owns & maintains infrastructure (e.g. runways, terminal, parking)
- Leases space to airlines, concessions, vendors
- Coordinates operations, safety, and capital projects

## FAA

- Regulates aviation safety and standards
- Manages air traffic control and airspace use
- Provides funding for Airport Improvement Program eligible projects (grants)

## TSA

- Regulates standards for airport security
- Screens passengers and baggage
- Controls access to secure/sterile areas

## Airlines

- Operates flights, crews, scheduling
- Handles ticketing, baggage services, customer services related to flights
- Responsible for aircraft and passengers
- Leases space

## Boise Airport Fire Department

- Provides Aircraft Rescue & Fire Fighting (ARFF) services
- Responds to aircraft incidents, fires, emergency medical, and airfield emergencies

## Boise City Police

- Handles public safety, policing, and emergency response
- Law enforcement

## Military

- Operates independently but shares airspace/runways
- Coordinates with FAA and airport operations

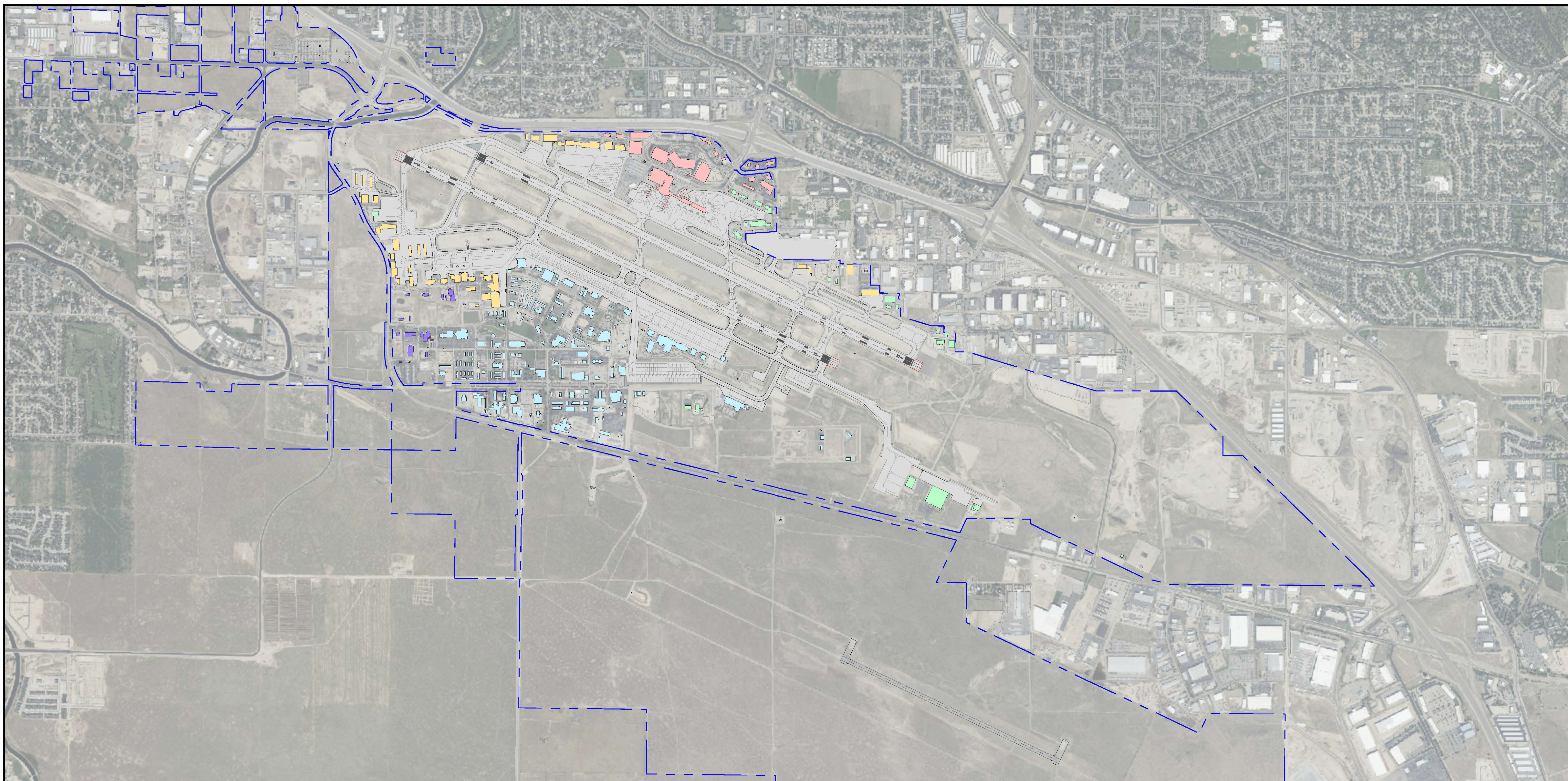
## Concessions (Food & Beverage, Retail, Rentals)

- Private businesses operating under airport contracts
- Provides amenities for purchase or rent
- Leases space

## Ground Handlers

- Provide ramp services (baggage, pushback, cleaning, servicing)
- Work for airlines or as contracted providers

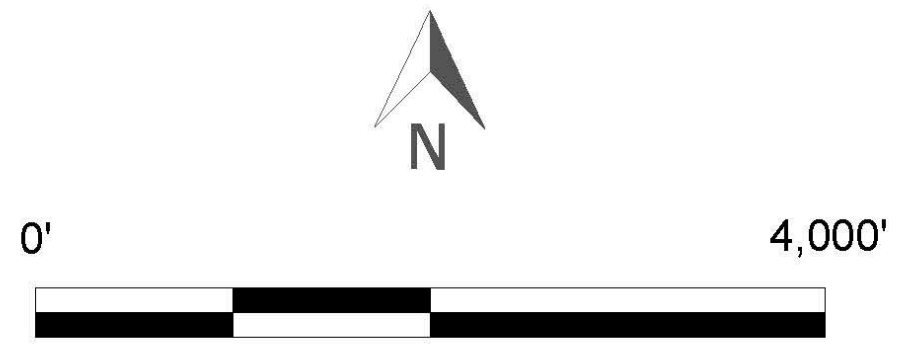
# AIRPORT OVERVIEW



C:\Users\whm\OneDrive - InterVISTAS Consulting\OneDrive\Desktop\New BOI Inventory Figures.dwg, Apr 28, 2026

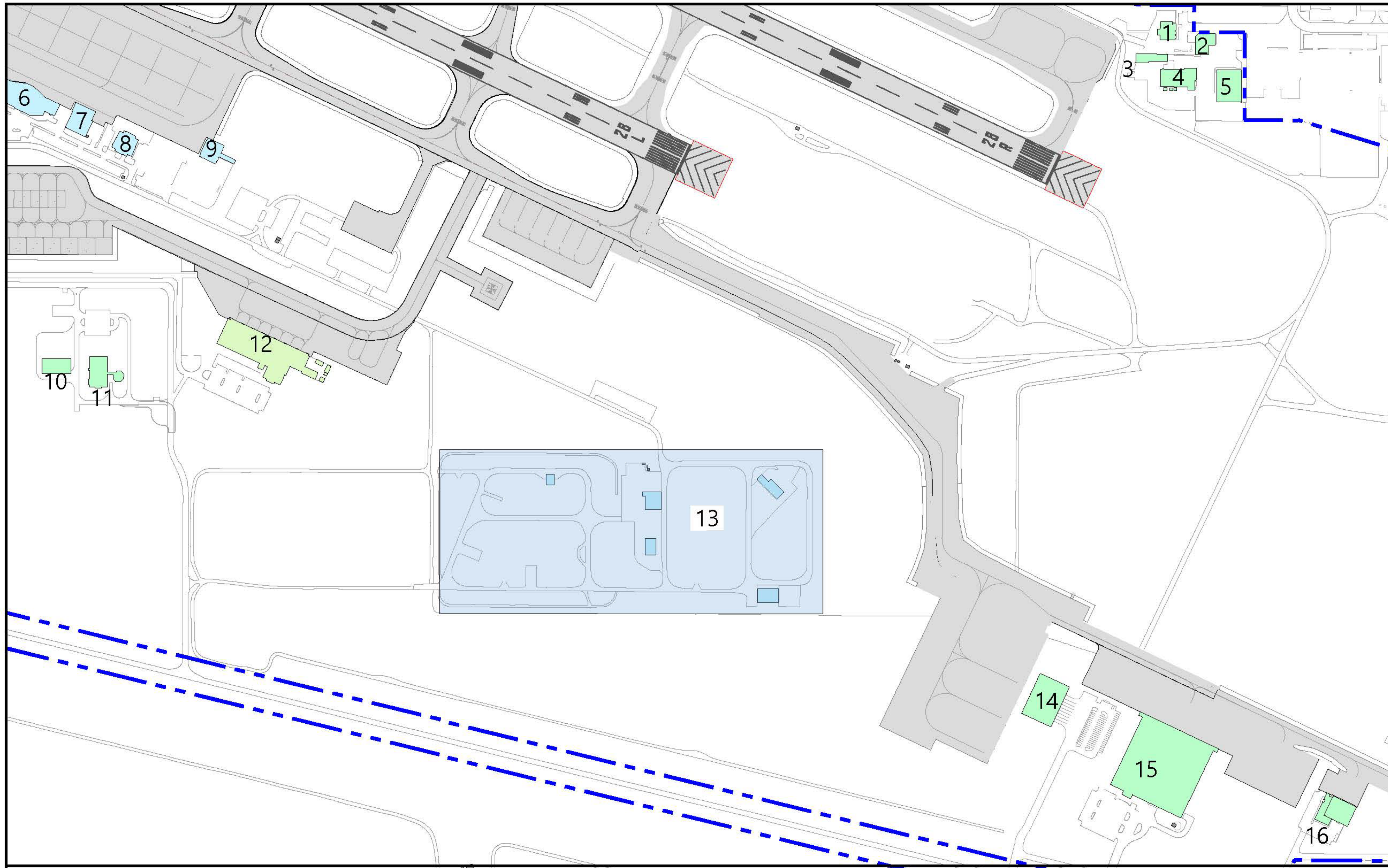
**LEGEND**

- Terminal Area
- General Aviation
- Support/Cargo
- Military
- Non-Aviation
- Airport Property Line



Base Map  
Boise Airport Master Plan  
Boise Airport  
April 2026

# AIRPORT EAST FACILITIES



Number	Facility/Tenant
1	Customs and Border Protection
2	Airfield Maintenance
3	Airfield Maintenance
4	Airfield Maintenance
5	Ultimate Logistics
6	Air National Guard
7	Air National Guard
8	Air National Guard
9	Air National Guard
10	Federal Aviation Administration Mobile Asset Staging Area
11	FAA Airport Traffic Control Tower/ Satellite Control Center
12	Army National Guard
13	Air National Guard
14	Amazon
15	Skywest
16	Idaho Transportation Department

**LEGEND**

- Support/Cargo
- Air National Guard
- Army National Guard
- Airport Property Line



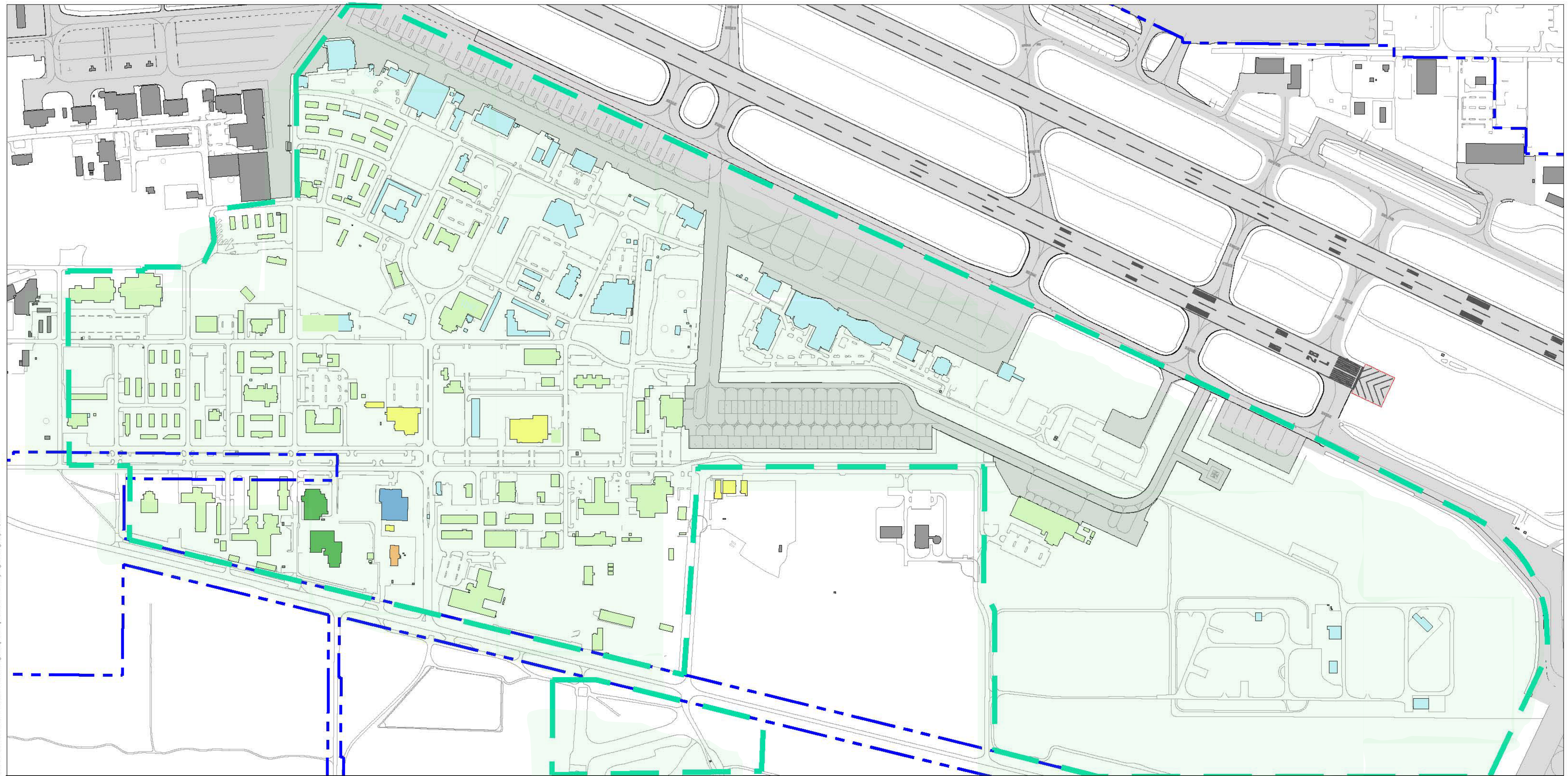
0'  Not to Scale

General Aviation Base Map  
Boise Airport Master Plan  
Boise Airport  
April 2026



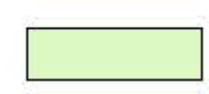

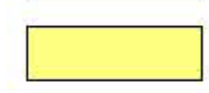





C:\Users\jthomas\OneDrive - InterVISTAS\Consulting\Group\Drawings\New BCI Inventory Figures.dwg (au07\_2026)

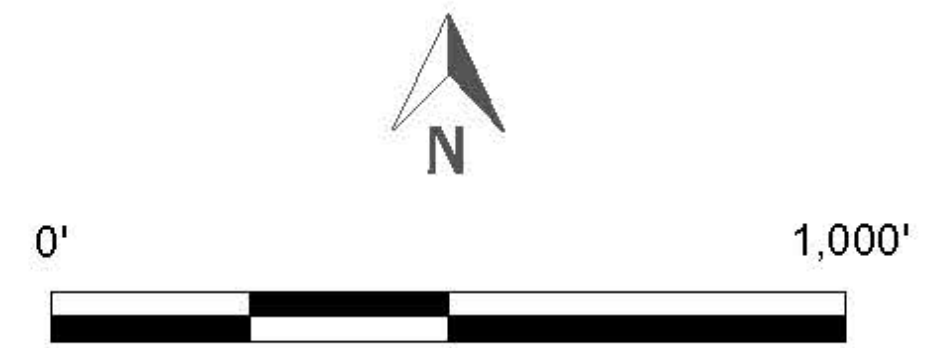
# AIRPORT MILITARY FACILITIES



C:\Users\win01\OneDrive - InterVISTAS Consulting Group\Desktop\New BCI Inventory\Figures\fig May 29, 2026

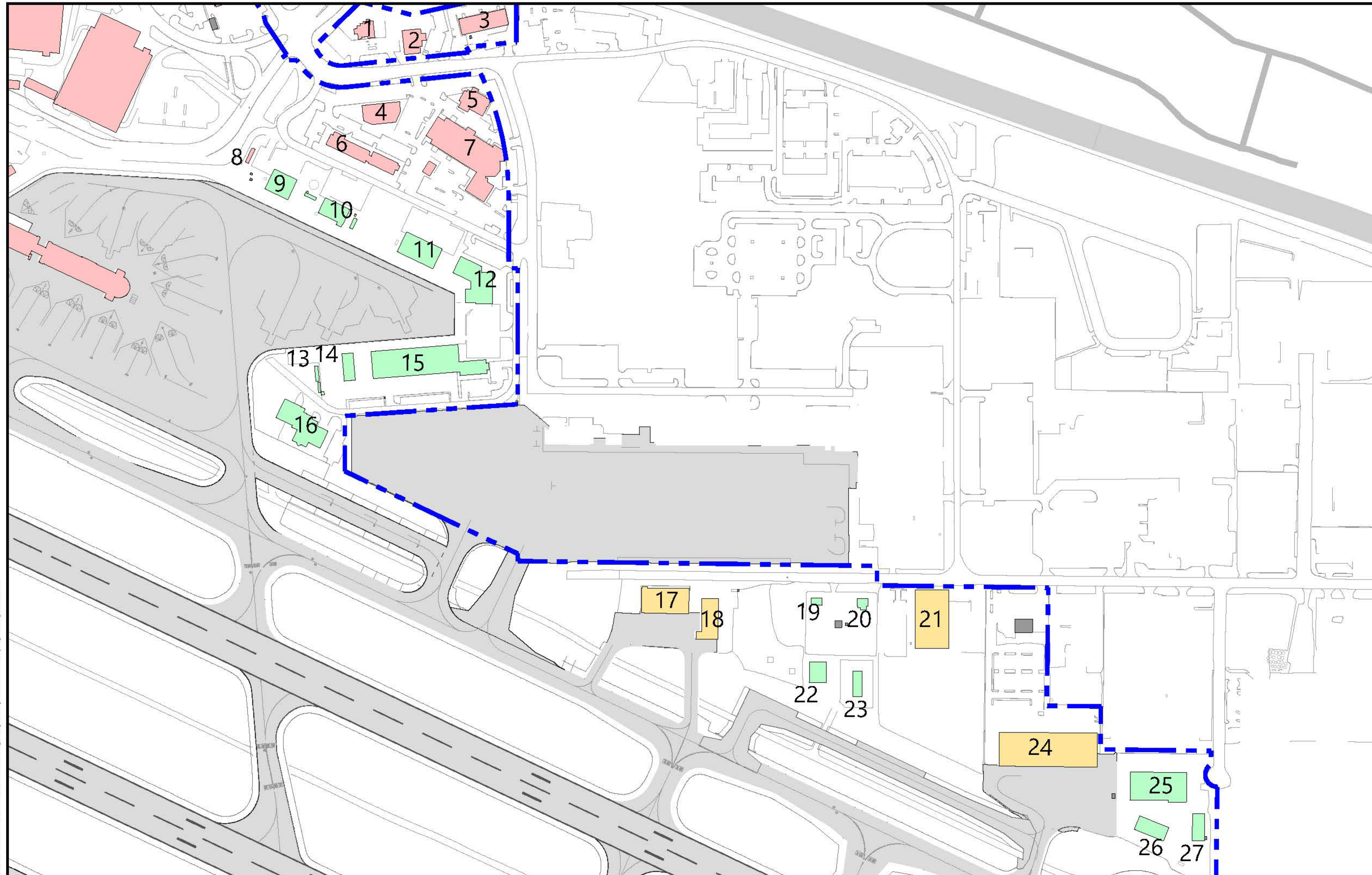
## LEGEND

- |   |   |
|---|---|
|  Army National Guard |  Navy                  |
|  State               |  Marines               |
|  Army Reserves       |  Airport Property Line |
|  Air National Guard  |  Military Lease Line   |



Military Facilities  
Boise Airport Master Plan  
Boise Airport  
April 2026

# AIRPORT NORTH-EAST FACILITIES



Number	Facility/Tenant
1	Former Bank -Vacant
2	Future Boise Airport Admin
3	Airport Inn -Vacant
4	Hensel Phelps/ Idaho Dept of Water Resources
5	Kopper Kitchen -Vacant
6	Layover Inn
7	Commodore (Best Western Inn)
8	Western Aircraft -Trailer
9	United Cargo
10	Delta Ground Service Equipment/ Inflight -Vacant
11	Southwest Cargo/Horizon Cargo
12	USPS/Air Mail Facility
13	FedEx
14	FedEx
15	FedEx -ADL Development
16	Aircraft Rescue and Fire Fighting/FedEx
17	Idaho Helicopters
18	Idaho Helicopters
19	Federal Aviation Administration
20	Federal Aviation Administration
21	Simplot
22	Airfield Lighting and Electrical Building/ Facilities Maintenance Group
23	Airfield Lighting and Electrical Building
24	Alscott
25	Airfield Maintenance
26	Airfield Maintenance
27	Airfield Maintenance

**LEGEND**

- Terminal Area
- General Aviation
- Support/Cargo
- Airport Property Line

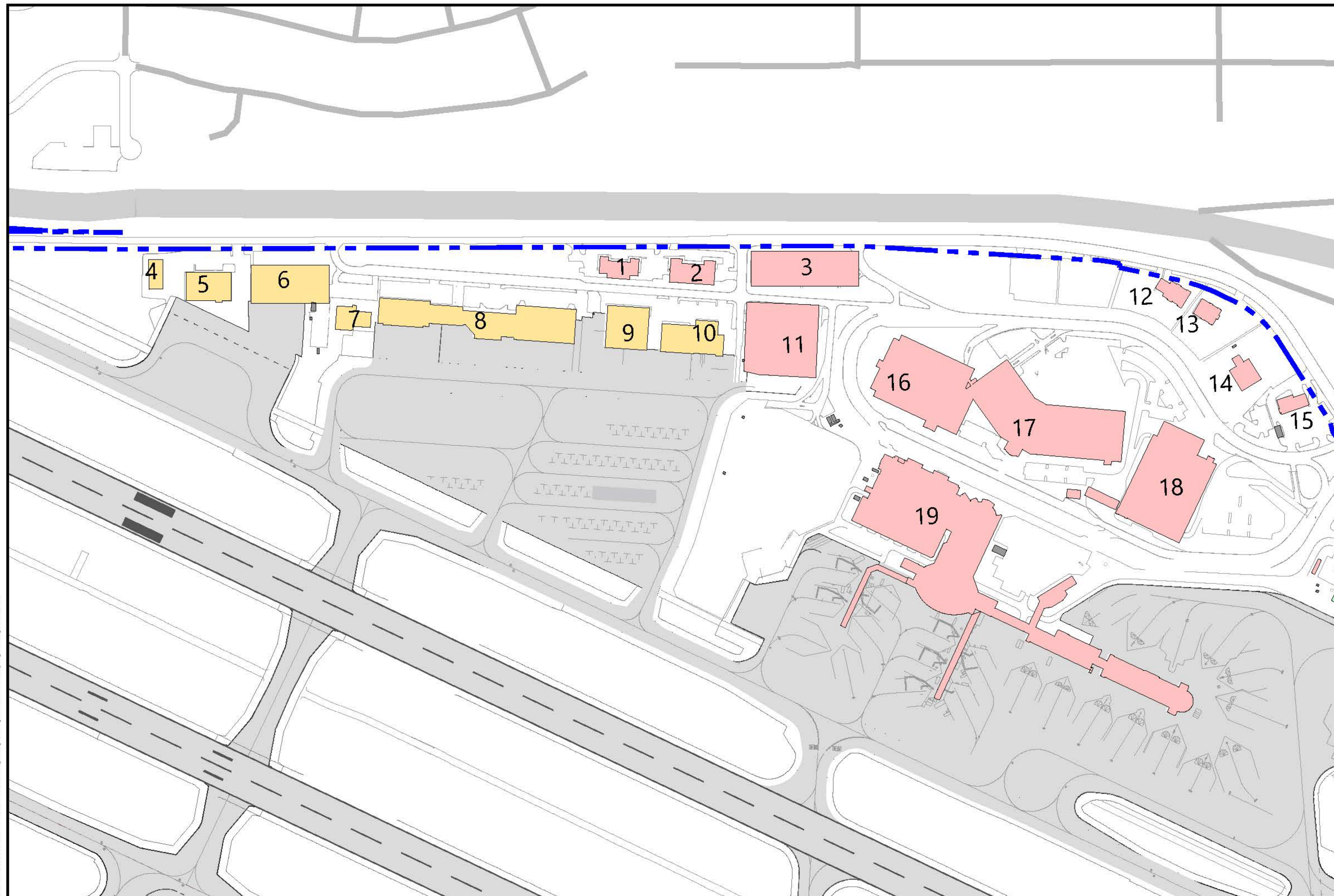


General Aviation Base Map  
Boise Airport Master Plan  
Boise Airport  
April 2026



C:\Users\mdu\OneDrive - InterVISTAS Consulting Group\Desktop\New ECI Inventory Figures.dwg, Jun 09, 2026

# AIRPORT NORTH-WEST FACILITIES



Number	Facility/Tenant
1	Linda Leach Trust
2	Linda Leach Trust
3	Employee Parking Garage
4	Jackson Jet Center -FireHawk Helicopters
5	Jackson Jet Center -FireHawk Helicopters
6	Jackson Jet Center
7	Jackson Jet Center
8	Jackson Jet Center
9	Jackson Jet Center
10	Jackson Jet Center
11	Consolidated Rent A Car Center
12	Rental Car Facilities
13	Rental Car Facilities
14	Rental Car Facilities
15	Airport Chevron
16	West Parking Garage
17	Main Parking Garage
18	East Parking Garage
19	Terminal

**LEGEND**  
 Terminal Area  
 General Aviation  
 Airport Property Line

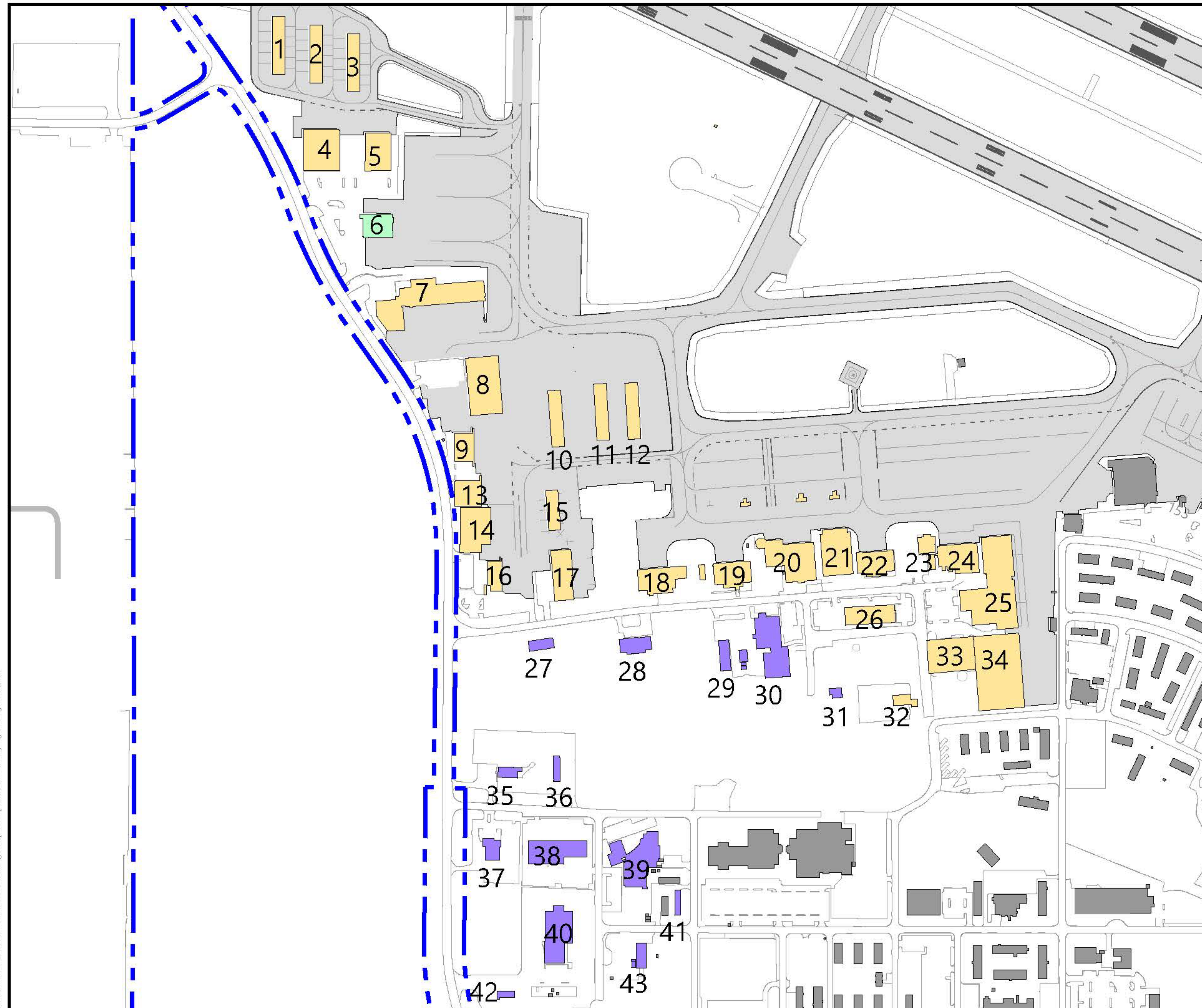
General Aviation Base Map  
 Boise Airport Master Plan  
 Boise Airport  
 April 2026

0' 1,000'

**InterVISTAS**

C:\Users\win01\OneDrive - InterVISTAS Consulting Group\Desktop\New BQI Inventory\Figures.dwg Jan 09, 2026

# AIRPORT SOUTH-WEST FACILITIES

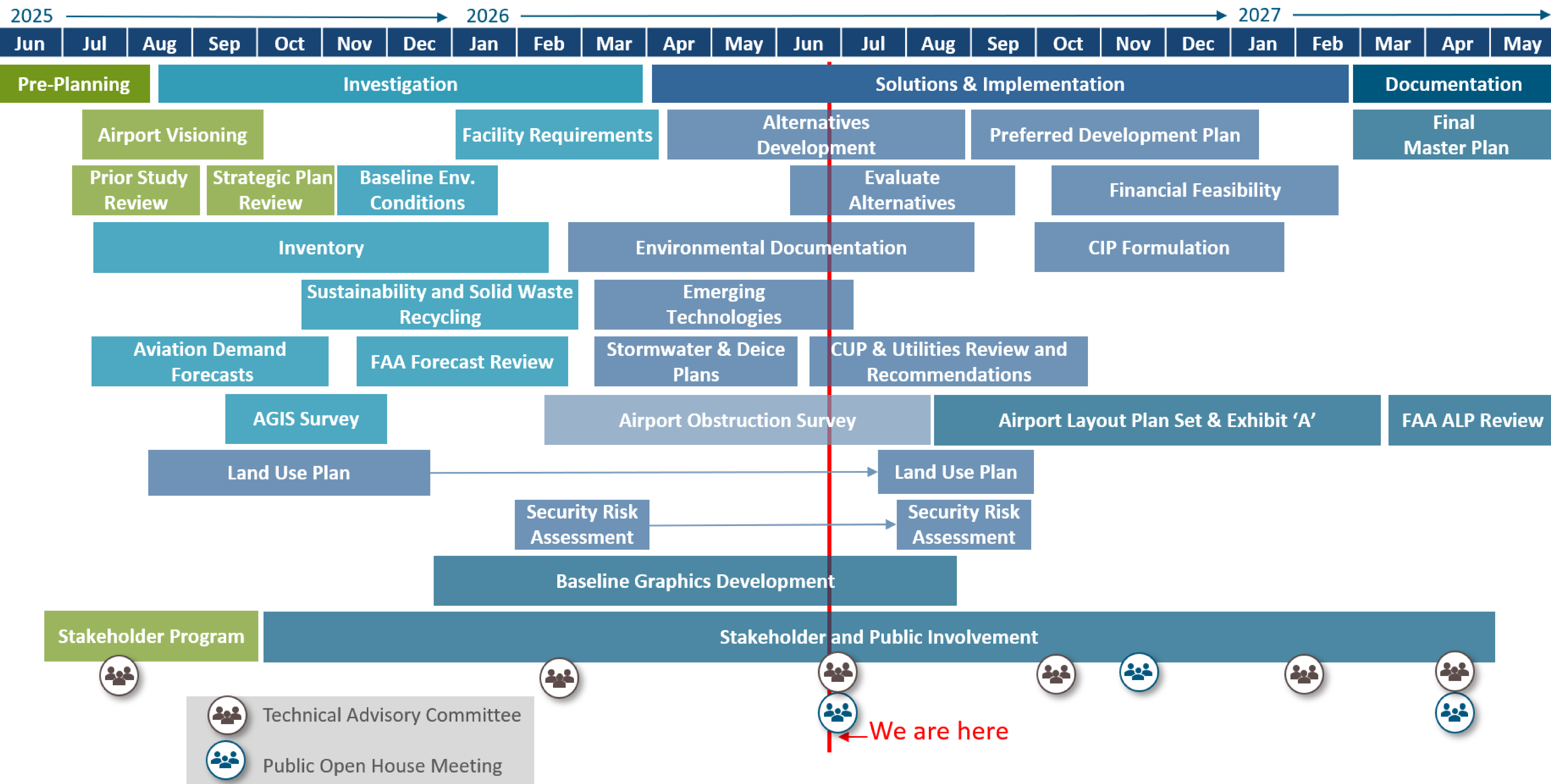


Number	Facility/Tenant	Number	Facility/Tenant
1	T-hangars	23	Western Aircraft
2	T-hangars	24	Western Aircraft
3	T-hangars	25	Western Aircraft
4	Appleton	26	Western Aircraft
5	Micron	27	Cripe
6	UPS	28	Precision Propeller
7	Turbo Air	29	Cripe
8	Turbo Air	30	Cripe
9	Albertson's	31	Cripe
10	T-hangars	32	Western Aircraft
11	T-hangars	33	Western Aircraft
12	T-hangars	34	Western Aircraft
13	Albertson's	35	Buss Automotive
14	Albertson's	36	Buss Automotive
15	Jackson Jet Center -Conyan	37	Boise City Parks Dept
16	Jackson Jet Center -Conyan	38	Boise City Equipment Services
17	Jackson Jet Center -Conyan	39	Idaho Humane Society
18	Western Aircraft	40	Valley Regional Transit
19	Vacant	41	Artcraft Refinishing
20	Atwood Properties (ASU)	42	Valley Regional Transit
21	Western Aircraft	43	Idaho Humane Society
22	Western Aircraft		

**LEGEND**  
 General Aviation  
 Support/Cargo  
 Non-Aviation  
 Airport Property Line

General Aviation Base Map  
 Boise Airport Master Plan  
 Boise Airport  
 April 2026

# MASTER PLAN SCHEDULE



# CHANGES SINCE LAST MASTER PLAN

- + Consolidated Rental Car Facility
- + Employee Parking Garage
- + Public Parking Garage
- + TNC Holding Lot
- + Relocation of ITD Hangar
- + Removal of Taxiway Charlie
- + Removal of Taxiway Delta
- + Construct New Taxiway Delta
- + Removal of Taxiway Golf
- + Construct Taxiway Whisky
- + Expand TSA Screening Checkpoint
- + Develop Southeast Cargo Area
- + Concourse A Pavement
- + Expansion of Aircraft Deicing
- + Reconstruct Runway 10L/28R (in progress)

