



October Commission Report

Director's Update

Given by Rebecca Hupp, Airport Director
Boise Airport

OCTOBER 2, 2024

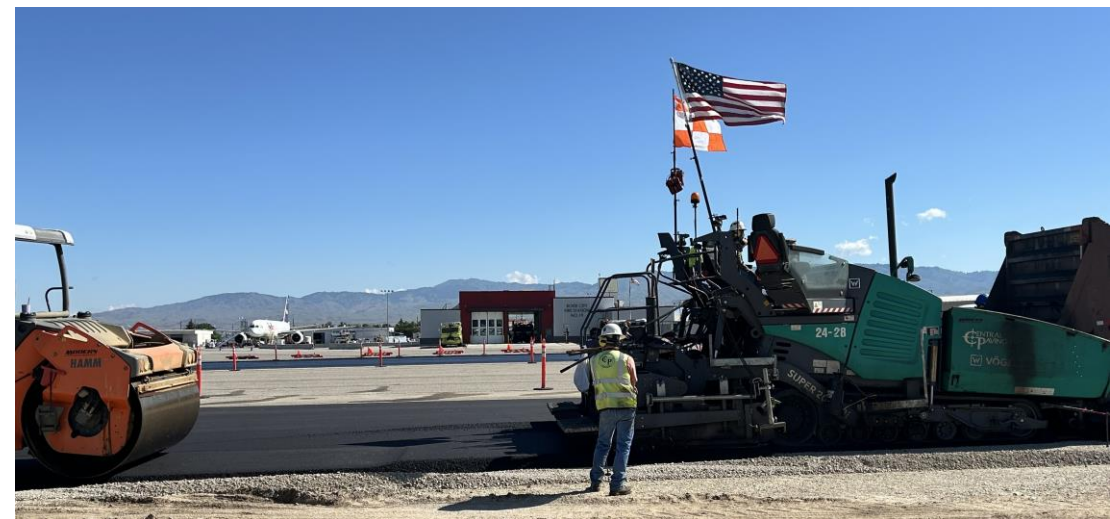
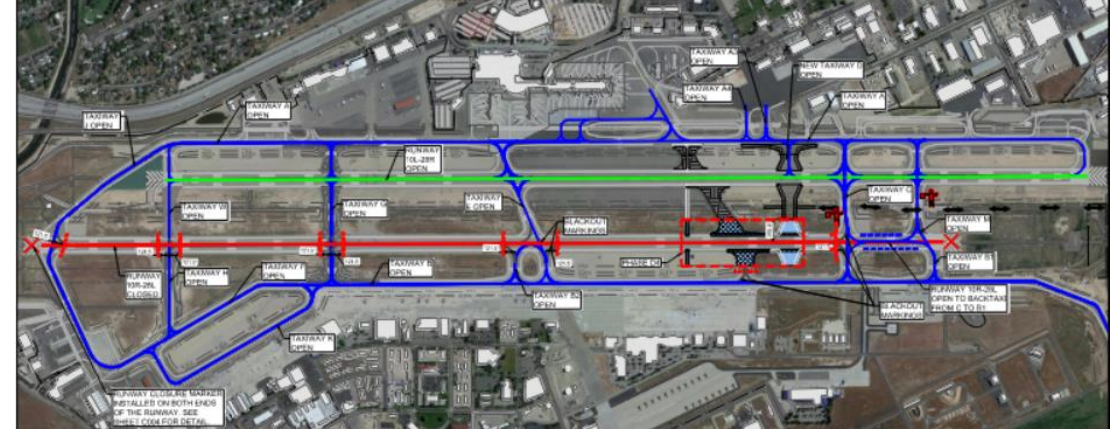
Consolidated Rent-A-Car Center (ConRAC)

- Steady progress continues.
- Level 1 slab on grade complete.
- Level 2 deck pours later this month.
- Customer Service Building foundations complete.
- Ramp foundations are being placed.



Taxiway D Relocation & ARFF Access Road Construction

- Phase 5 is expected to begin Oct. 7th.
- RW 10R-28L is closed and will be closed for the remainder of the project.
- Project completion is expected in early November.



Taxi Lane N North Extension

- Construction began on Taxi Lane September 23rd.
- Construction will last until mid-November.
- Taxi Lane construction will allow for future GA Hangers to access the airfield.



Concourse Development and Terminal Improvements

- Fentress, the program architect, continues work on:
 - Finalizing the Baggage Handling System Assessment
 - Developing forecast, programming, and a GAP analysis to inform the program
 - Investigating and modeling existing conditions
- Owner's Representative, Jacobs Project Management Co:
 - The contract was on the 10/1 City Council agenda
 - Goal is to help Airport staff manage and execute projects.
- Construction Manager at Risk (CMAR):
 - Expecting to issue a Construction Manager at Risk RFQ this fall.



Cell Phone Waiting Area



- An awareness campaign that includes radio, billboards, social media, earned media and more will begin Oct. 7th.
- The new lot is expected to open October 15th.

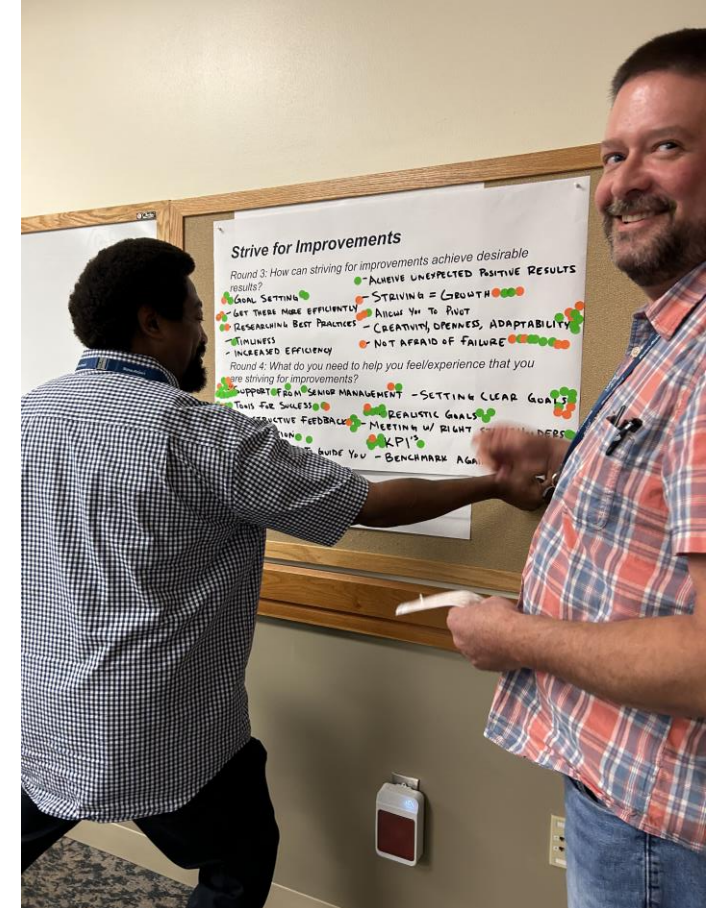
Pre-conditioned Air Units Installed



- Pre-conditioned air units are installed at gates C8A and C11.
- Funding from a Voluntary Airport Low Emissions (VALE) Grant to replace fuel-powered mobile PCA Units with electrified ones.
- The VALE Program helps airports meet their state-related air quality responsibilities under the Clean Air Act.

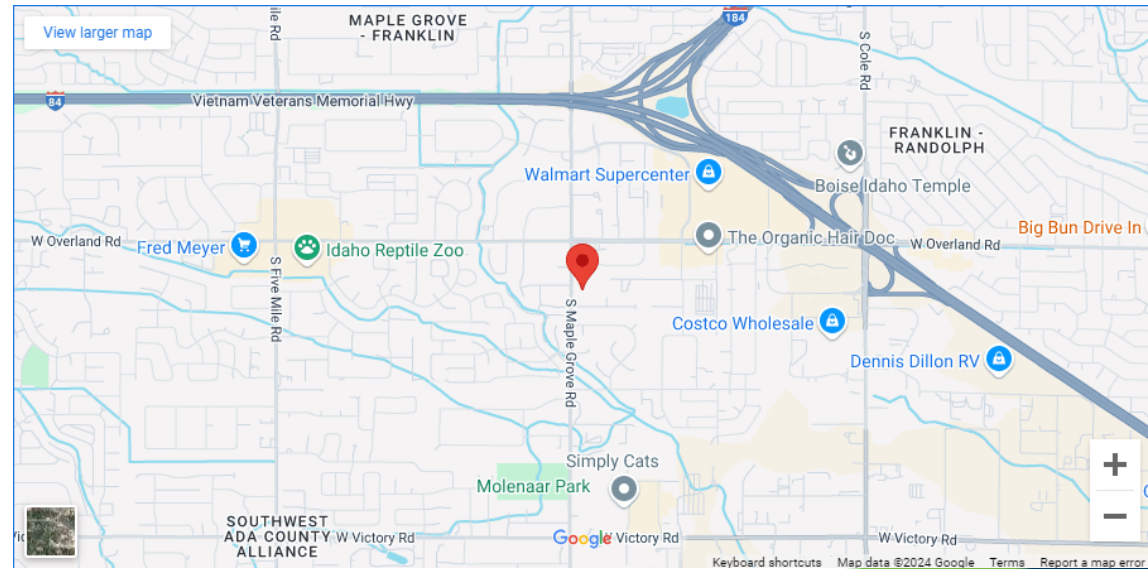
Strategic Planning Session

- Approximately 40 BOI team members representing all airport departments, several partners and city leadership met for a half-day session.
- Objectives were to empower employees by:
 - Promoting understanding the strategic plan
 - Explaining the purpose of the plan and how it connects to daily work
 - Describing how operational work might impact the plan
 - Explaining the next steps in the plan
 - Identifying what is needed in the culture to help achieve the strategic plan



Density for Apartment Development

- On a vote of 3-2, the Boise City Council approved a project to build 174 apartments on Maple Grove Road, south of the intersection with Overland Road.
- The project is located within the Airport Influence Area.
- City planning staff and airport leadership spoke against the project.



General Aviation Hangout



- Annual event hosted by BOI to thank our General Aviation tenants.
- 60+ attendees, including ATCT, ITD Aeronautics and others.
- Very enjoyable evening!

Ponderosa Aero Club turns 50!

- Established in 1974.
- Members include instructors who provide training for private pilots and those seeking instrument, commercial and flight instructor ratings, along with backcountry instruction.
- Commissioner Jamie Boesiger is a Ponderosa Aero Club member.



Idaho's First-Ever Girls in Aviation Day

- More than 100 girls and young women ages 8-18 attended.
- Five BOI staff showcased their aviation-related careers including project management, operations and maintenance.
- The airport sponsored the event, hosted by Women in Aviation – Idaho Chapter.



NWAAAE Coming to Boise Next Week

- Annual Conference will be held at the Riverside Hotel.
- BOI team members have been involved in the planning; many are participating in panels during the weeklong conference.
- About 300 airport executives, consultants and others are expected to attend.

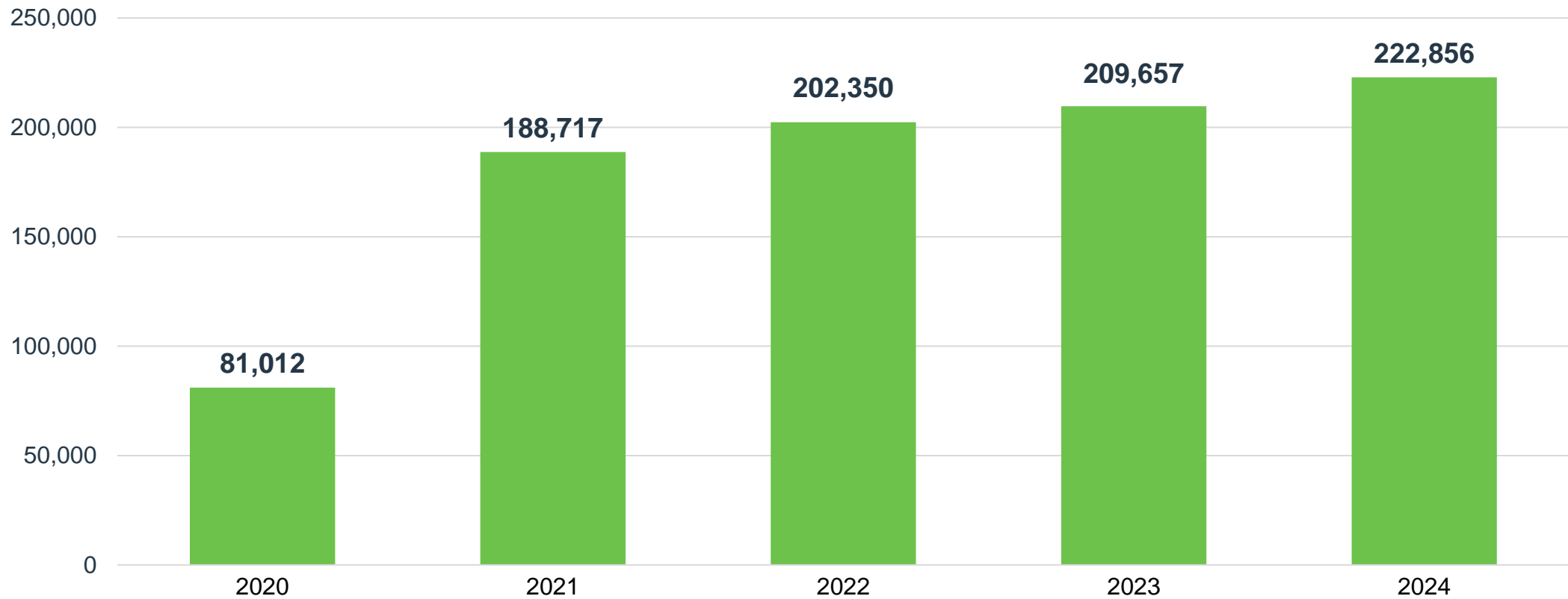


NORTHWEST CHAPTER
AMERICAN ASSOCIATION
OF AIRPORT EXECUTIVES

A small, dark silhouette of an airplane in flight, positioned to the right of the text 'AMERICAN ASSOCIATION OF AIRPORT EXECUTIVES'.

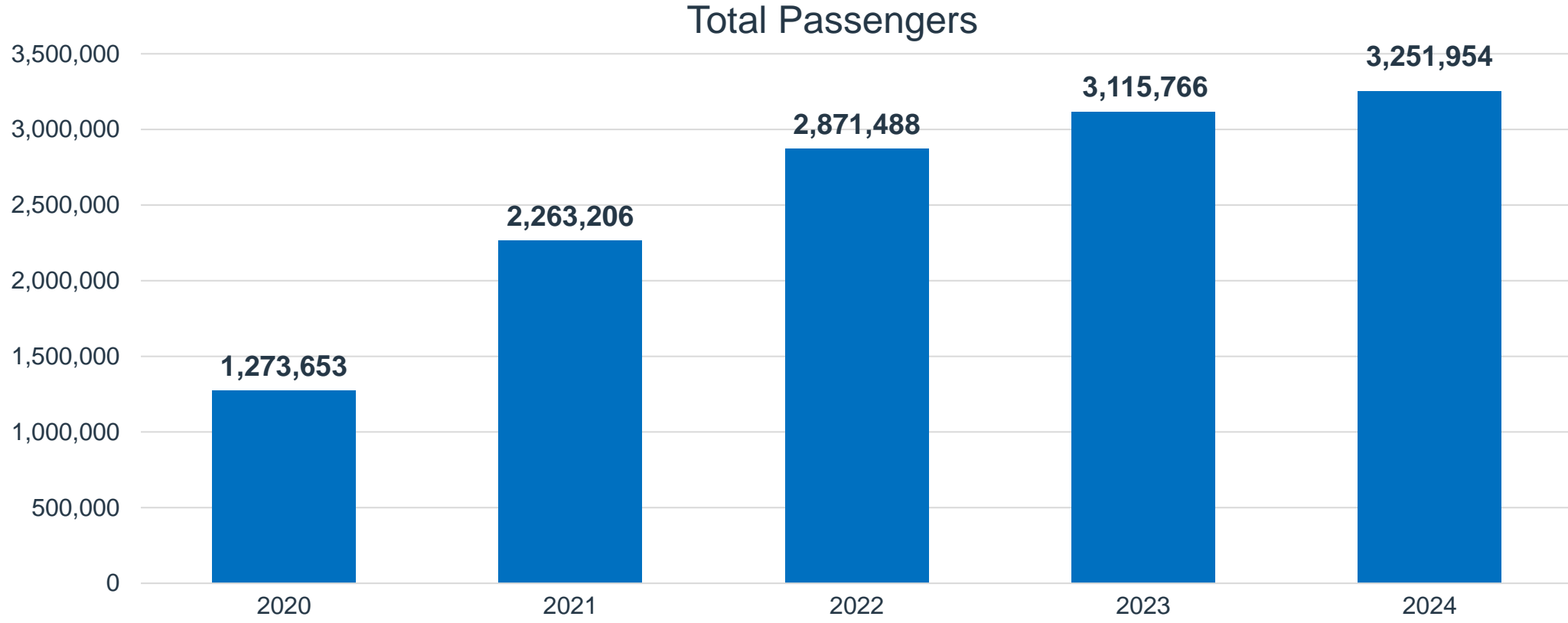
August Enplanements

Up nearly 6% from August 2023



2024 Total Passengers (through August)

YTD passenger counts are up by 4% over 2023—our previous busiest year on record



AUGUST 2024

Top 10 Operating Revenue Description	FY 2024	FY 2023	\$ Change	% Change
Parking Lot	\$ 19,651,713	\$ 15,074,216	\$ 4,577,497	30%
Signatory Airline Landing Fees	\$ 12,520,049	\$ 5,756,707	\$ 6,763,341	117%
Rental Car Concession	\$ 5,999,067	\$ 5,763,958	\$ 235,109	4%
Terminal Rent - Airlines	\$ 5,223,251	\$ 4,087,579	\$ 1,135,672	28%
Industrial Land Rent	\$ 4,024,014	\$ 3,770,617	\$ 253,398	7%
Landings/Freight	\$ 1,929,637	\$ 952,274	\$ 977,363	103%
Terminal Concessions – Food/Beverage	\$ 1,854,302	\$ 1,050,406	\$ 803,897	77%
Terminal Concessions – Retail	\$ 1,560,073	\$ 982,298	\$ 577,775	59%
Advertising	\$ 679,574	\$ 480,646	\$ 198,928	41%
Rideshare (TNC) Revenue	\$ 626,075	\$ 508,394	\$ 117,681	23%
Total Top 10 Operating Revenue	\$ 54,067,754	\$ 38,427,095	\$ 15,640,659	--
Other Operating Revenue	\$ 3,501,552	\$ 3,955,474	\$ (453,922)	-11%
Total Operating Revenue	\$ 57,569,306	\$ 42,382,569	\$ 15,186,737	36%

AUGUST 2024

Top 10 Operating Expenses Description	FY 2024	FY 2023	\$ Change	% Change
Personnel	\$ 14,091,122	\$ 11,568,931	\$ 2,522,192	22%
Indirect Cost Reimbursement	\$ 4,616,069	\$ 3,948,154	\$ 667,916	17%
Fire Service	\$ 4,193,255	\$ 2,871,034	\$ 1,322,221	46%
Policing Service	\$ 4,182,263	\$ 3,032,533	\$ 1,149,730	38%
Parking Management	\$ 2,964,496	\$ 3,759,519	\$ (795,023)	-21%
R/M – Structural/Electrical/Plumbing	\$ 1,158,362	\$ 1,106,581	\$ 51,782	5%
Chemicals	\$ 915,316	\$ 789,293	\$ 126,023	16%
R/M – Fleet Management	\$ 882,434	\$ 587,403	\$ 295,031	50%
Power	\$ 722,002	\$ 928,042	\$ (206,040)	-22%
Credit Card Fees	\$ 641,143	\$ 399,937	\$ 241,206	60%
Total Top 10 Operating Expenses	\$ 34,366,464	\$ 28,991,426	--	--
Other Operating Expense	\$ 6,273,372	\$ 5,517,650	\$ 755,722	14%
Total Operating Expense	\$ 40,639,836	\$ 34,509,076	\$ 6,130,760	18%

The logo features a stylized graphic of three curved, overlapping shapes in shades of blue and green, resembling a wing or a leaf, positioned above the text.

Boise Airport

www.iflyboise.com